



R.S.L. MEDICAL

FOCUS NEWS LETTER NOVEMBER 2014 Q4

Planmed PLANMECA



HITACHI
ALOKA

Welcome to the Winter issue of the RSL Medical NEWS LETTER "FOCUS"

We Are Very Pleas to Announce That RSL MEDICAL Have Been Appointed as Official KUBTEC Partner Company in Ireland.

Kubtec are leaders in specimen X-ray systems, and manufacture the only 3D tomosynthesis specimen system available today "Mozart"



MOZART with TomoSPEC: Specimen Imaging for the 21st Century



3D intraoperative imaging for the most comprehensive margin analysis available

Zero warm up, auto-calibration, and rapid image acquisition without repositioning the specimen to save valuable procedure time

MOZART Specifications

Spatial Resolution 10 lp/mm, contact mode

Energy Range 10-50 kV

Tube Current up to 1.0 mA

Window Filtration 0.005" beryllium

Focal Spot 50 μ m, nominal

Power 90-250 VAC, 50/60 Hz, 500 VA

User Interface Touch screen monitor, icon based interface

DICOM Interface Annotate, Store, Print, Modality Work List

Size (W x D x H) 24" x 23" x 57" (61 x 58 x 145 cm)

Weight 300 lbs. (136 kg)

CONTINUED

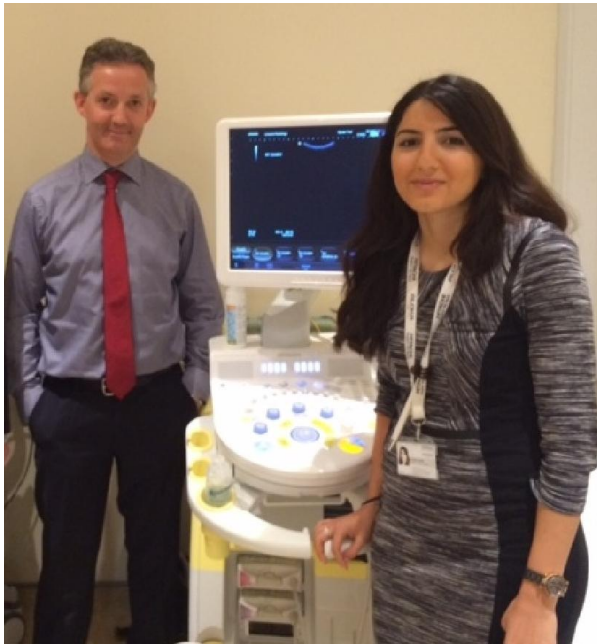


RSL MEDICAL Supply a new Hitachi Aloka Ultrasound system to Limerick Radiology

RSL MEDICAL have delivered a Hitachi Aloka Preirus system to the Limerick Radiology Group at Barrington's Hospital Limerick.

Along with the award winning Hitachi Aloka Preirus a new Dicom Archive and Clinical Review station from SSTMED were also supplied.

This varioSTORAGE Archive from SSTMED in Germany substantially enhance the workflow at Limerick Radiology.



SSTMED, Schaeff Systemtechnik, founded in 1991, provides a variety of products and services within the scope of system engineering and project management around medical IT-Solutions. At Limerick Radiology the following modules were implemented.

- **DICOM store (SCU and SCP)**
- **DICOM modality worklist**
- **VarioImage Review Station**
- **Offline backup on DVD**

Left: Dr Padraig O'Brien (Consultant Radiologist)

Right: Ms Shada Azodi(Clinical Applications Specialist Hitachi Aloka)

CONTINUED /



FOCUS NEWS LETTER NOVEMBER 2014 Q4



PLANMECA REAFFIRM PARTNERSHIP WITH DUBLIN DENTAL UNIVERSITY HOSPITAL AT THE OFFICIAL OPENING OF NEW FACILITIES AT DDUH



Dublin Dental University Hospital, with Planmeca Oy and the Finnish Embassy of Ireland, held an event to mark the continued partnership between DDUH and Planmeca on the 11th of November 2014.

Planmeca during 2013 and 2014 have reequipped DDUH with the very latest Digital Dental Solutions.

With Digital X-ray and 3D systems to state of the art Dental Units and preclinical dental simulation benches in a new training laboratory.

Planmeca and DDUH have a research partnership which has lead to several innovations and to the involvement of local Irish companies as suppliers to Planmeca in projects worldwide.



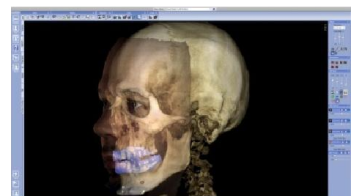
Mr. Heikki Kyöstilä (Centre)

President and founder of Planmeca presented a Flying Swan sculpture to,

Ms. Emer Daly (Right) Chairperson of The Dental University Hospital Board at the opening of the new state of the art facilities.

Mr. Jari-Pekka Teräväinen Export Manager (Left) Planmeca OY

The Flying Swan is the Corporate Symbol of Planmeca



CONTINUED /



FOCUS NEWS LETTER NOVEMBER 2014 Q4



StephaniX Xtream DR Dream System with Auto-Tracking and Auto-Positioning as Standard

Stepanix Xtream DR Dream is now available with Thales Pixium EZ3543 and EZ2030 WiFi FPD.

- The Lightest 35X43 cm WiFi DR detector available, at only 2.8Kgs including battery
- The Thales Pixium EZ3543 (14x17) has a true 8 hour battery life.
- The Thales Pixium EZ2430 (10x12) small format detector.



- Truly Shareable with other devices
- CR Mode using inbuilt detector memory allowing use without a link to the acquisition system.



Tallaght Take Delivery of a New Hitachi Aloka F75 Obstetrics and Gynaecology Ultrasound System.

The Adelaide and Meath Hospital, Dublin, Incorporating The National Children's Hospital have taken delivery of a Hitachi Aloka F75 in the Out Patients Department.

The Hitachi Aloka F75 a High End Ultrasound system based on the Aloka Prosound series of systems which have a long heritage in woman's health.



NaturalErgonomics™

- * Widely height adjustable console panel
- * Freely placeable viewing monitor
- * High Definition (HD) Wide IPS-pro viewing monitor
- * Large IPS-pro touch panel with intuitive 8 rotary encoder

Routine exam assistance

- * Quick Setter™
- * Image Optimizer™



CONTINUED/



R.S.L. MEDICAL

FOCUS NEWS LETTER NOVEMBER 2014 Q4

Planmed PLANMECA



**HITACHI
ALOKA**

RSL MEDICAL SPONSOR CRANIAL SCANNING COURSE AT ROTUNDA HOSPITAL



RSL MEDICAL are very pleased to once again supply the Ultrasound Systems for the Cranial Scanning Course at the Rotunda Hospital Dublin on Friday 24th of October last.

During the day the course attendees were able to use several Hitachi Aloka systems. Including the High End Noblus Portable and High End Preirus Radiology system.

Ms. Shada Azodi (Hitachi Applications Specialist) from Hitachi Aloka gave a presentation on Ultrasound Technology , assisting Dr Ailbhe Tarrant and Dr Stephanie Ryan.

A very big thank you to Dr Elaine Neary for organising this event.



CONTINUED/



R.S.L. MEDICAL

FOCUS NEWS LETTER NOVEMBER 2014 Q4

Planmed

PLANMECA



**HITACHI
ALOKA**

Follow up training day at Bantry General Hospital 18th November 2014



Following the successful initial installation of a Hitachi Aloka Preirus High End Ultrasound system a Follow-up training day was held on the 18th of November, to further optimise the system to the user's requirements. This further demonstrates Hitachi Aloka's and RSL MEDICAL commitment to ongoing customer support.

Above Left, Ms Ruth O'Driscoll [Clinical Specialist Ultrasound]

Above Centre, Ms Shada Azodi [Clinical Applications Specialist Ultrasound] Hitachi Aloka

Above Right, Ms Roisin O'Carroll [Radiography Services Manager]



R.S.L. MEDICAL

FOCUS NEWS LETTER NOVEMBER 2014 Q4



**HITACHI
ALOKA**



If Attending RSNA Please do call by, Tom Mc Govern of RSL MEDICAL will be attending RSNA and will be available to answer any questions you may have, please email: sales.service@rslmedical.ie
To confirm an appointment.

**HITACHI
ALOKA**

**Planmed
PLANMECA**



Hitachi Aloka Medical North - Hall B: 7927 Hitachi Healthcare Group South - Hall A: 4766	Planmed Inc North - Hall B: 6929	Sedecal USA Inc South - Hall A: 3500
---	---	---



If Attending BMUS 2014 Please do call by the Hitachi Aloka booth.
Both Tom McGovern and Gerry McElroy (ultrasound product manager) will be attending BMUS 2014



RSL MEDICAL Contact RSL Medical for more information on Products and Services

Email: Sales.service@rslmedical
TEL: 01-4097669